

T4000 Compact Industrial Printer

Powerful Printing Capability in Small Footprint

Duty Cycle 5,000 labels/day

Color 3.5" LCD Screen

- Intuitive icon menu
- Nine-key control panel for easy navigation



Enterprise-level Connectivity

- USB, RS232, Ethernet
- Optional: WiFi, Parallel, GPIO



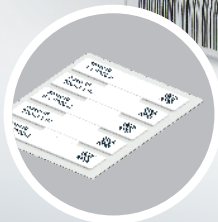
Dependable Design

- Full metal enclosure
- Bifold door, minimize footprint, easy for maintenance
- Blue color-coded cues for straightforward operation



Energy Star Certified

- US government-backed symbol for energy efficiency



Media

- Label width 1"~4.72"
- Media type: roll, fan-fold, tags, paper, film, tickets
- Easy side loading
- 8" media roll; 1.5"/3" core

RFID



- External fixed antenna (option RFID encoder)
- Types: Standard / On-metal
- RFID label calibration: automatic
- RFID label calibration
- On-metal tags up to 1.2mm thick
- Overstrike and re-print bad RFID labels



Media Handling

- Continuous, Tear-Off
- Optional: peel/rewind, cutter



Printhead

- Easy snap-in installation with minimal setup
- Optional RFID encoder & antenna
- Interchangeable printhead (203/300 dpi)



Ribbon

- 450m ribbon
- Width range: 1.6"~4.33"

T4000 | Datasheet

Model	T4000	
Resolution	203dpi or 300dpi	
Printing Method	Direct Thermal and Transfer Thermal	
Max. Print Speed	10ips @ 203dpi, 7ips @ 300dpi	
Max. Print Width	4.1" (104mm)	
Media Type	Roll or Fan-Fold Labels, Tags, Paper, Film, Tickets	
Media Handling	Standard: Continuous, Tear-Off Options: Peel/Rewind (paper labels, 6ips, rewinds liner from 8 in roll) Cutter (thickness as per media spec, life 500,000 cuts) (Does not support on-metal RFID labels/tags)	
Media Width	Min 1" (25.4mm) / Max 4.72" (120mm)	
Media Thickness	0.002" (0.06mm) to 0.011" (0.279mm) / RFID Max thickness 0.05" (1.2mm)	
Media Length	50" (1,270mm)	
Media Core Diameter	1.5" (38.1mm) - 3.0" (76.2mm)	
Media Max. Roll Diameter	8.0" (209mm)	
Ribbon Type	Wax, Wax/Resin, Resin	
Ribbon Width	Min 1.6" (40mm) / Max 4.33" (110mm)	
Ribbon Length	1476.4 ft (450m)	
Ribbon Core Diameter	1.0" (25.4mm)	
Interface I/O	Standard: Serial RS232, USB, and Ethernet 10/100Base T / Optional: Wi-Fi 802.11a/b/g/n/ac, MFi Bluetooth 5.0	
WiFi Security Encryption	WEP 40/128bit, WPA Personal (PSK), WPA2 Personal (PSK), Enterprise (AES CCMP)	
WiFi Security Authentication	EAP-TLS, EAP-TTLs, PEAPv0/MS-CHAPv2, PEAPv1, EAP-MDS, LEAP	
Remote Management Software	PrintNet Enterprise Suite, SOTI Connect: IoT device management	
Memory	128 MB Flash / 128 MB DDR	
Line Input	Auto Range 100 - 240 VAC (48 - 62 Hz)	
Fonts	Font Technologies: Intellifont, TrueType, Unicode Standard Fonts: OCRA, OCRB, Courier, Letter Gothic, CG Times, CG Triumvirate/Bold/Condensed Premium Asian Fonts (Optional SD card): Simplified Chinese, Japanese, Korean, Thai Andale Asian Fonts (Optional SD card): Simplified Chinese, Traditional Chinese, Korean, Japanese PDF/ PostScript Level 3: 35 fonts	
Graphic Formats	PCX, TIFF, BMP, PNG	
Barcode	1D barcode: BC-412, Code 11, Code 39, Code 35, Code 93, Codabar, Code128 Subsets A/B/C, Industrial 2 of 5, Interleave 2 of 5, German I-2/5, EAN-8, EAN-13, UCC/EAN-128, UPC-A, UPC-E, UPCSHP, UPS 11, MSI, Matrix 2 of 5, PLESSEY, POSTNET, 4-state PostBar, Australian 4-state, FIM, ITF14, TELEPEN, PLANET, USPS Intelligent Mail, LOGMARS 2D barcode: PDF-417, MicroPDF-417, Maxicode, DataMatrix, QR Codes, Aztec, GS1 Databar (RSS-14)	
Printer Language	PGL/ZGL/TGL/IGL/STGL/DGL/IEGL/MGL/EGL	
RFID	RAIN UHF Passive (GS1 EPC Gen2 / ISO 18000-63) Fixed Position Antenna Standard/On-Metal Tags/ Additional Tag Constructions Minimum Label/Tag Pitch 0.625" (15.9 mm)	On-Metal Tag Thickness up to 0.05" (1.2mm) Printer languages: PGL, ZGL, STGL, MGL Counters: Tracks good/overstruck labels/tags
Operating Environment	Operating Temperature: 32° to 104°F (0° to 40°C) (limitations based on selected media) / Operating Humidity: 25-85% Non-Condensing Storage Temperature: -40° to 140° F (-40° to 60° C) / Storage Humidity: 10 - 90% Non-Condensing	
Regulatory Compliances	Emissions: FCC, CE, IC, CCC, KC Safety: cTUVus, CE, IC, EAC, SMARK, NOM, CCC, KC, BIS, BSMI Environmental: RoHS, WEEE, Energy Star 3.0	RFID: FCC, CE, ANATEL, ICT, KC, MIC, NCC., SRRC, WPC WiFi/BT: US, Canada, European Union, China
Physical Dimension (W x H x D)	10.40" (264mm) x 10.9" (276mm) x 17.9" (455mm)	
Weight	22lbs (10kg)	
Options & Accessories	Wi-Fi 802.11a/b/g/n/ac MFi Bluetooth 5.0 Cutter Peel/Rewind	Andale Asian Font Card Premium Asian Font Card QCMC (Quick Change Memory Card) RFID Encoder/Antenna System



TSC PRINTRONIX
AUTO ID

Global Headquarters

9F, No. 95, Minquan Road, Xindian District
New Taipei City, Taiwan 231
Office: +886 2 2218 6789

EMEA

Georg-Wimmer-Ring 8b
85604 Zorneding, Germany
Office: +49 8106 37979 000

Americas

3040 Saturn Street, Suite 200
Brea, CA 92821 U.S.A.
Office: +1 657 258 0808

©2022 TSC Auto ID Technology Co., Ltd. All Rights Reserved.

TSC Printronix Auto ID [tscprinters.com](https://www.tscprinters.com)